

Le curve
—●— CONDOMINIOS —●—



Important tourist destination
in the Riviera Nayarit
Located just north of Puerto
Vallarta
It belongs to the municipality
of Bahía de Banderas

NUEVO NAYARIT



Nuevo Vallarta is attractive to people seeking a second home by the beach or a warm place to retire, and it's a great option for **vacationing and investing**. It offers golden sandy beaches, warm weather all year round, and incredible gastronomy, making it a very **desirable location**.

It is the **perfect destination** in Riviera Nayarit. Its proximity to Puerto Vallarta, the airport, and a wide range of **services**, as well as its accessibility by road and connectivity with other destinations in the Riviera, make it the **best place to live and invest in real estate**.

Known for its **golf** courses, **marina**, and beautiful extensive **beach**.



RIVIERA NAYARIT

The best area to invest



The #2 most visited tourist destination in Mexico. Safe city.



New highway GDL-Vallarta (2:30 hrs. away)



Competitive investment costs in the region.



Excellent weather and beautiful sunsets.



Area with the highest growth in Bahía de Banderas in real estate developments with more than 100 projects being commercialized in 2023.



Favorite destination for medical tourism, leisure tourism and sports such as golf and surfing.

PRIME LOCATION





Hospital Joya

2.98 MILES

1.30 MILES



1.67 MILES



GRUPO VIDANTA

0.86 MILES

THEME PARK
OPENING 2023-2024

PUERTO VALLARTA



3.54 MILES

BEACH
2.36 MILES

BLVD. NAYARIT

TEPIC - PUERTO

AMECA RIVER

INTERNATIONAL AIRPORT

6.21 MILES



SAYULITA 19.2 MILES

PUNTA MITA 20.3 MILES

BUCERÍAS 6.5 MILES

LE CURVE

MARINA VALLARTA 6.4 MILES

PUERTO VALLARTA 6.8 MILES

Le curve
— CONDOMINIOS —





VIDANTAWORLD



ABOUT VIDANTA

NUEVO NAYARIT



Connected to VidantaWorld by the SkyDream, Vidanta Nuevo Vallarta is the most important luxury development in Latin America. This extraordinary destination is filled with crystal-clear pools, sumptuous hotels, world-class amenities, delicious culinary options, Mexico's best golf courses, and much more.

A night scene of an immersive theme park. In the foreground, there is a body of water with several glowing, cylindrical lanterns floating on it. The background shows a large, dark structure with a thatched roof, possibly a temple or a palace, set against a dark sky with some light filtering through. The overall atmosphere is mysterious and ancient.

IMMERSIVE THEME PARK

A KINGDOM OF ENDLESS
POSSIBILITIES

A night scene of a water theme park. A wooden walkway with a railing runs along a body of water. The water is dark, and there are some lights reflecting on it. The background shows a large, dark structure with a thatched roof, similar to the one in the first panel. The overall atmosphere is adventurous and exciting.

WATER THEME PARK

THE MOST EXCITING WATER
EXPERIENCE IN THE WORLD

A night scene of a nature theme park. A winding path or walkway is visible, surrounded by lush greenery and trees. There are several small, thatched-roof structures scattered throughout the scene. The overall atmosphere is peaceful and natural.

NATURE THEME PARK

A MAGNIFICENT CELEBRATION
OF FLORA AND FAUNA



SkyDream

PARKS GONDOLA

THE WORLD'S FIRST CABLE CAR IN A BEACH DEVELOPMENT

Thanks to the SkyDream Parks cable car, VidantaWorld visitors will be able to soar among the clouds and be transported in just a few minutes from Vidanta Nuevo Vallarta to our new and innovative theme parks.

This cable car system, unique in its class, takes the Vidanta experience to new heights.



4 RESIDENTIAL TOWERS



CONTROLLED ACCESS



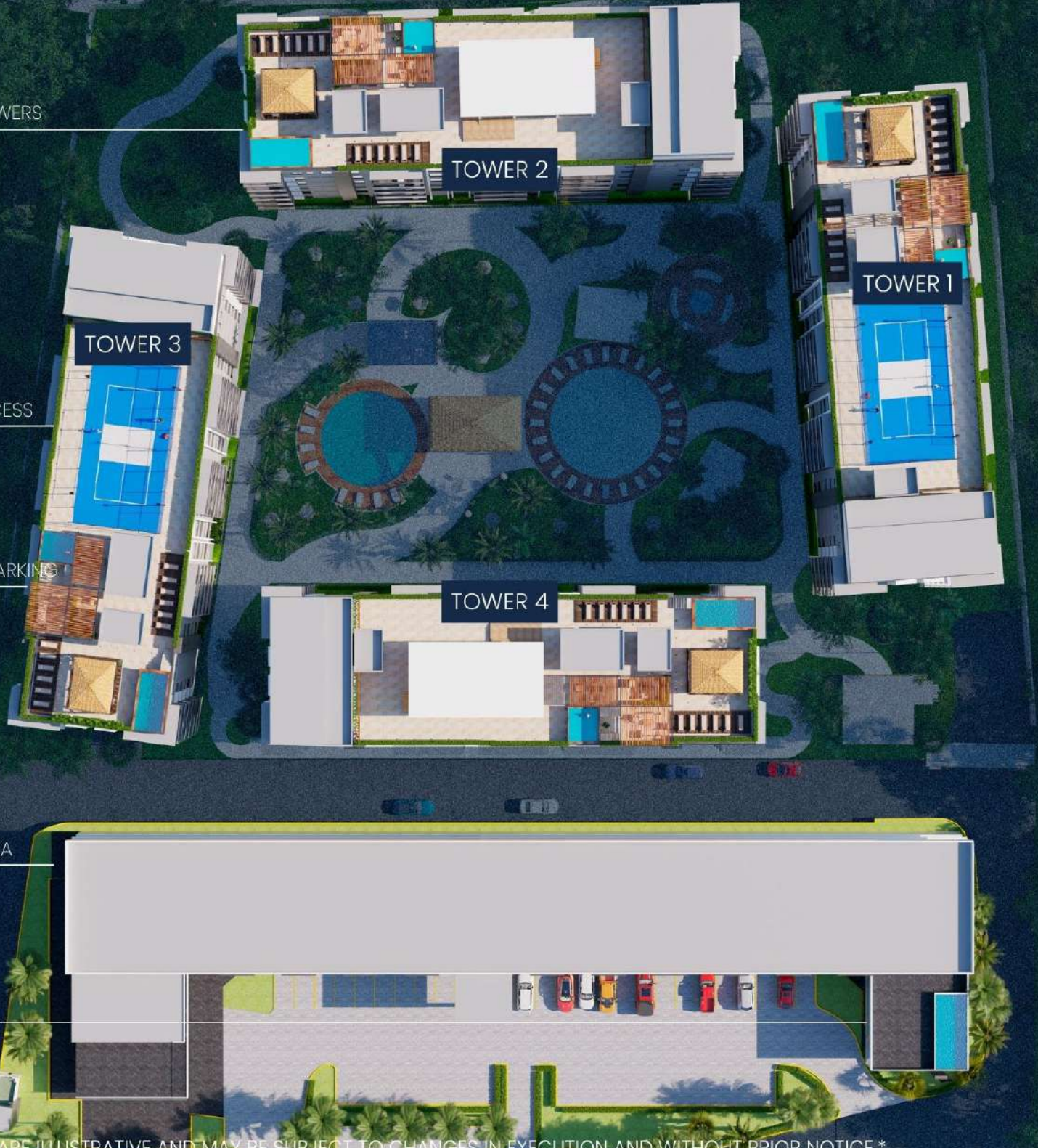
UNDERGROUND PARKING



COMMERCIAL AREA



HOTEL



TOWER 2

TOWER 1

TOWER 3

TOWER 4

ALL IMAGES ARE ILLUSTRATIVE AND MAY BE SUBJECT TO CHANGES IN EXECUTION AND WITHOUT PRIOR NOTICE.*

TOWER 3

Soon

TOWER 2

PRE-SALE
30% sold in 3 months

TOWER 4

Soon

TOWER 1

90% sold in just
6 months

WE ARE A COMPLETE
SUCCESS STORY

TOWER 1

90% SOLD
IN JUST 6 MONTHS

TOWER 2

30% MARKETED
IN JUST 3 MONTHS

GROUND FLOOR

Amenities



Main Pool



Palapas area and sundeck



Gym



Pet Zone



Running Track



Snack Bar



Pool with wading pool



Multiuse room



Toilets



ALL IMAGES ARE ILLUSTRATIVE AND MAY BE SUBJECT TO CHANGES IN EXECUTION AND WITHOUT PRIOR NOTICE.*

Amenities

PER TOWER

IN THE 4 TOWERS



Infinity Pool



Jacuzzi



Terraces



Sunbathing



Toilets



Grill Zone

TOWER 1



Kids Club



Paddle Court

TOWER 2



Movie Room



Games Room

TOWER 3



Spa



Pickleball Court

TOWER 4



Games Room



Coming soon



45,595.92 SQFT
OF GREEN SPACES

ALL IMAGES ARE ILLUSTRATIVE AND MAY BE SUBJECT TO CHANGES IN EXECUTION AND WITHOUT PRIOR NOTICE.*

OUR TYPE OF ARCHITECTURE CONTEMPORARY

CHARACTERISTICS:

- Minimalism
- Greater freedom in form and design
- Sustainable housing
- Increased presence of technology
- Playing with natural light and illumination
- Spacious areas
- Elegance and simplicity
- Fusion with the environment

FIND OUT OUR
UNIT MODELS



MÓNACO

807.29 SQFT

1 Bedroom

1, 1/2 Bathrooms



VERSALLES

947.22

SQFT

2 Bedrooms

2, 1/2 Bathrooms



CANNES

968.75

SQFT

2 Bedrooms

2, 1/2 Bathrooms



MARSELLA

1270.14

SQFT

3 Bedrooms

3, 1/2 Bathrooms



TOULOUSE

1345.49 SQFT

3 Bedrooms

3 1/2 Bathrooms

LOCK OFF



PENTHOUSE BURDEOS

4 1/2 Bathrooms

4 Bedrooms

1872.92 SQFT



PENTHOUSE NIZA

4 1/2 Bathrooms

4 Bedrooms

1937.5 SQFT

ACCESS



PENTHOUSE PARÍS

2615.63 SQFT

4 Bedrooms

4 1/2 Bathrooms

LOCK OFF



ACCESO

807.29 SQFT

1 Bedroom



LEVEL 2, 3, 4, 5, 6.

MÓNACO



Living room

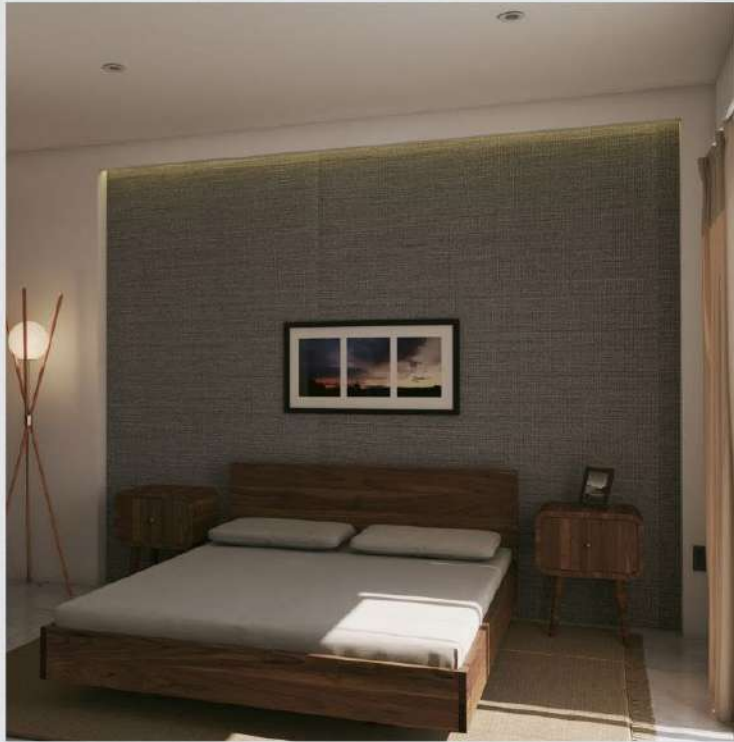


Kitchen



1 1/2
Bathrooms

ALL IMAGES ARE ILLUSTRATIVE AND MAY BE SUBJECT TO CHANGES IN EXECUTION AND WITHOUT PRIOR NOTICE.*



ALL IMAGES ARE ILLUSTRATIVE AND MAY BE SUBJECT TO CHANGES IN EXECUTION AND WITHOUT PRIOR NOTICE.*

947.22 SQFT
2 Bedrooms



ACCESS

LEVEL 1, 2, 3, 4, 5, 6.

VERSALLES



Living room



Kitchen



2 1/2
Bathrooms



2 Closets



Laundry Room

ALL IMAGES ARE ILLUSTRATIVE AND MAY BE SUBJECT TO CHANGES IN EXECUTION AND WITHOUT PRIOR NOTICE.*



ALL IMAGES ARE ILLUSTRATIVE AND MAY BE SUBJECT TO CHANGES IN EXECUTION AND WITHOUT PRIOR NOTICE.*



968.75 SQFT
2 Bedrooms

CANNES



Living room



Kitchen



2 1/2
Bathrooms



Laundry Room

ALL IMAGES ARE ILLUSTRATIVE AND MAY BE SUBJECT TO CHANGES IN EXECUTION AND WITHOUT PRIOR NOTICE.*



ALL IMAGES ARE ILLUSTRATIVE AND MAY BE SUBJECT TO CHANGES IN EXECUTION AND WITHOUT PRIOR NOTICE.*



1270.14
SQFT
3 Bedrooms

LEVEL 1, 2, 3, 4, 5.

MARSELLA



Living room



Kitchen



3 1/2
Bathrooms



Laundry Room

WITH VIEW OF AMENITIES

ALL IMAGES ARE ILLUSTRATIVE AND MAY BE SUBJECT TO CHANGES IN EXECUTION AND WITHOUT PRIOR NOTICE.*



ALL IMAGES ARE ILLUSTRATIVE AND MAY BE SUBJECT TO CHANGES IN EXECUTION AND WITHOUT PRIOR NOTICE.*



LOCK OFF
1345.49 SQFT
3 Bedrooms

LEVEL 1, 2, 3, 4, 5.

TOULOUSE



Living room



Kitchen



3 1/2
Bathrooms



3 Closets



Laundry Room

ALL IMAGES ARE ILLUSTRATIVE AND MAY BE SUBJECT TO CHANGES IN EXECUTION AND WITHOUT PRIOR NOTICE.*



ALL IMAGES ARE ILLUSTRATIVE AND MAY BE SUBJECT TO CHANGES IN EXECUTION AND WITHOUT PRIOR NOTICE.*

1872.92 SQFT

4 Bedrooms



ACCESS

LEVEL 6

PENTHOUSE BURDEOS



Living room



Kitchen



4 1/2 Bathrooms



5 Closets



Laundry Room



Dining room

ALL IMAGES ARE ILLUSTRATIVE AND MAY BE SUBJECT TO CHANGES IN EXECUTION AND WITHOUT PRIOR NOTICE.*



ALL IMAGES ARE ILLUSTRATIVE AND MAY BE SUBJECT TO CHANGES IN EXECUTION AND WITHOUT PRIOR NOTICE.*

1937.5 SQFT

4 Bedrooms

ACCESS



LEVEL 6

PENTHOUSE NIZA



Living room



Kitchen



4 1/2 Bathrooms



4 Closets



Laundry Room

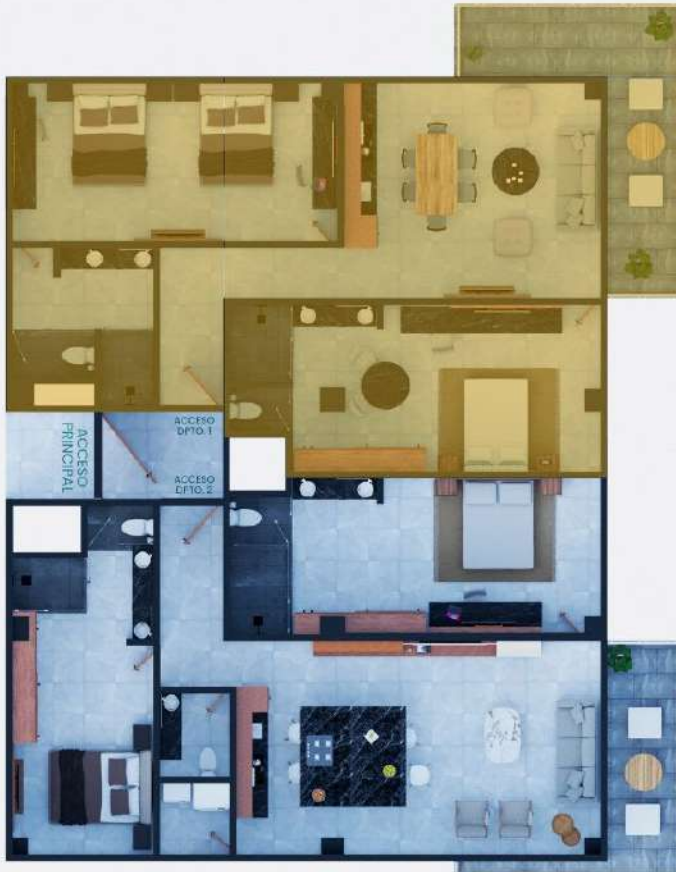


Dining room

ALL IMAGES ARE ILLUSTRATIVE AND MAY BE SUBJECT TO CHANGES IN EXECUTION AND WITHOUT PRIOR NOTICE.*



ALL IMAGES ARE ILLUSTRATIVE AND MAY BE SUBJECT TO CHANGES IN EXECUTION AND WITHOUT PRIOR NOTICE.*



LEVEL 6

LOCK OFF
2615.63 SQFT
4 Bedrooms

ONLY 8 UNITS
THROUGHOUT THE
DEVELOPMENT

PENTHOUSE
PARÍS



Living room



Kitchen



4 1/2 Bathrooms



4 Closets



Laundry Room



Dining room

ALL IMAGES ARE ILLUSTRATIVE AND MAY BE SUBJECT TO CHANGES IN EXECUTION AND WITHOUT PRIOR NOTICE.*





ROOF TOP

ALL IMAGES ARE ILLUSTRATIVE AND MAY BE SUBJECT TO CHANGES IN EXECUTION AND WITHOUT PRIOR NOTICE.*

A modern, multi-story apartment building with balconies and glass railings. In the foreground, there is a swimming pool with a wooden deck and several lounge chairs. A woman in a bikini is standing near the pool, and a man is sitting on a bench to the left. The scene is set in a lush, tropical environment with palm trees and other greenery. The overall atmosphere is serene and luxurious.

FOR ALL THESE REASONS AND MORE,
NOW IS THE TIME TO INVEST

TAKE ADVANTAGE OF
OUR PRE-SALE PRICES

ALL IMAGES ARE ILLUSTRATIVE AND MAY BE SUBJECT TO CHANGES IN EXECUTION AND WITHOUT PRIOR NOTICE *



Le curve
—• CONDOMINIOS •—