



The developer reserves the right to change colors, materials, amenities, plans, prices, and terms at any time without notice.

BÁLICA

RESORT LIVING



*The furniture and gardening are decoration suggestions.



Your home at Los Tigres

Unique, one of a kind and natural. Welcome to BÁLICA, the new and exclusive Grupo Gova project located at Los Tigres Residencial, Nuevo Vallarta. The perfect location for those seeking an unparalleled living experience on the Pacific Coast.






Av. Los Tigres esquina Acacia
Nuevo Vallarta, Nay.

HEALTHY LEAVING IN
THE HEART OF THE CITY

Area

Beach
🚗 6 min. | 2.3 km




Hotel Zone
🚗 7 min. | 2.7 km


Joya Hospital
🚗 6 min. | 2.3 km




Marina
🚗 9 min. | 3.6 km



Paradise Plaza
🚗 7 min. | 2.7 km




Golf Course
🚗 6 min. | 2.4 km




Highway 200
🚗 5 min. | 2 km

Vitania
🚗 6 min. | 2.6 km



Vidanta Theme Park
🚗 7 min. | 3.7 km



Lifestyle

AN EXCEPTIONAL LIVING EXPERIENCE

BÁLICA offers the best of both worlds: a modern, urban lifestyle, combined with the natural beauty of the Pacific Coast.

Each space was designed to maximize natural light and ventilation, offering a calm and serene environment in which you can relax and enjoy all that Nuevo Vallarta has to offer. The most beautiful beaches in the Bay along with a wide variety of nearby attractions, such as:



LOS TIGRES DEVELOPMENT



EL TIGRE GOLF COURSE



VIDANTA THEME PARK AND GOLF COURSE



THE MARINA, WHALE WATCHING AND WATER SPORTS.



BUSINESS CENTER AND JOYA HOSPITAL



SHOPPING MALLS AND SERVICES



GASTRONOMIC CORRIDOR

A LIFESTYLE,
WITHOUT EQUAL

Los Tigres Amenities

Los Tigres Residencial has everything
your family needs for a full and
harmonious life.



THE SPORTS CENTER
CONSISTS OF:

- Pet park,
- 2 tennis courts,
- 2 pickleball courts
- 1 basketball court,
- 1 volleyball court,
- 1 soccer field,
- Semi-Olympic pool,
- Gym,
- Yoga room,
- Spinning room,
- Recreation areas,
- A fun Kids Club

Filipao Nunes

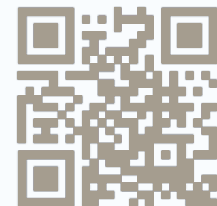
INTERIOR DESIGN



Architect of Portuguese origin, studied in Porto, Portugal; and finished his studies in Valladolid, Spain with extensive experience in the field of hospitality and entertainment, awarded three years in a row with the title "Best Restaurant Global" by the British magazine Design et AI, as well as recognized by the Restaurant&Bar Design Awards, the Mexican Society of Interior Designers and AAI. He is the founder and creative director of the multidisciplinary firm Filipao Nunes Arquitectos, formed by 40 young architects and interior designers distributed in various areas.



WEB: www.filipaonunes.com
INSTAGRAM: @filipaonunes



Arquitectos Asociados

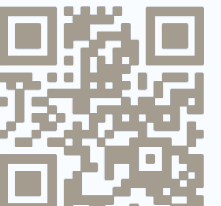
ARCHITECTURAL PROJECT



The aA arquitectos Asociados del Pacífico design workshop was founded in 2002 by a group of architects who shared the same passion and philosophy for understanding the ideas and needs of their clients to later translate them into a product that meets and exceeds expectations. With the identity of an office positioned and rooted in the traditional folklore of the streets and heart of Puerto Vallarta, today they have more than 21 years of experience reflected in the versatility of their projects built and located mainly in Puerto Vallarta and along the Riviera Nayarit, as well as in Los Cabos BC, Aguascalientes Ags, Guadalajara Jal, Cancun and Tulum Quintana Roo.



WEB: www.a-a.com.mx
INSTAGRAM: @aa_arquitectosdelpacifico



BÁLICA is the best Tourist Residential Development of Nuevo Vallarta



The developer reserves the right to change colors, materials, amenities, plans, prices, and terms at any time without notice.

*The furniture and gardening are decoration suggestions.



Interior

COMMON AREAS

The developer reserves the right to change colors, materials, amenities, plans, prices, and terms at any time without notice.

*The furniture and gardening are decoration suggestions.



Lounge Area

*The furniture and gardening are decoration suggestions.
The developer reserves the right to change colors, materials, amenities, plans, prices, and terms at any time without notice.

Pool

The developer reserves the right to change colors, materials, amenities, plans, prices, and terms at any time without notice.

*The furniture and gardening are decoration suggestions.



BBQ Terrace

*The furniture and gardening are decoration suggestions.
The developer reserves the right to change colors, materials, amenities, plans, prices, and terms at any time without notice.



Bar Area

The developer reserves the right to change colors, materials, amenities, plans, prices, and terms at any time without notice.

*The furniture and gardening are decoration suggestions.

General development data



152 UNITS
IN TOTAL



TOWERS:
FOUR, 6 LEVEL
TOWERS



MODELS:
5 PROTOTYPES



GRILL AREA, BAR,
JACUZZI & FIRE PIT



CONTROLLED
ACCESS AND
SECURITY



PARKING



TYPE 1
24 UNITS

TYPE 2
16 UNITS

TYPE 3
12 UNITS

TYPE 4
80 UNITS

TYPE 5
20 UNITS

BÁLICA
LIFE BY DESIGN

*The furniture and gardening are decoration suggestions.

The developer reserves the right to change colors, materials, amenities, plans, prices, and terms at any time without notice.



● TYPE 1
A-TOWER

24 UNITS
1 BEDROOM
1.5 BATHROOMS
1 CAR PARK

● TYPE 2
B-TOWER

16 UNITS
1 BEDROOM
2 BATHROOMS
1 CAR PARK

● TYPE 3
A-TOWER

12 UNITS
2 BEDROOMS
2 BATHROOMS
2 CAR PARK
CELLAR

● TYPE 4
B-TOWER

80 UNITS
2 BEDROOMS + FLEX
2 BATHROOMS
2 CAR PARK
CELLAR

● TYPE 5
A-TOWER

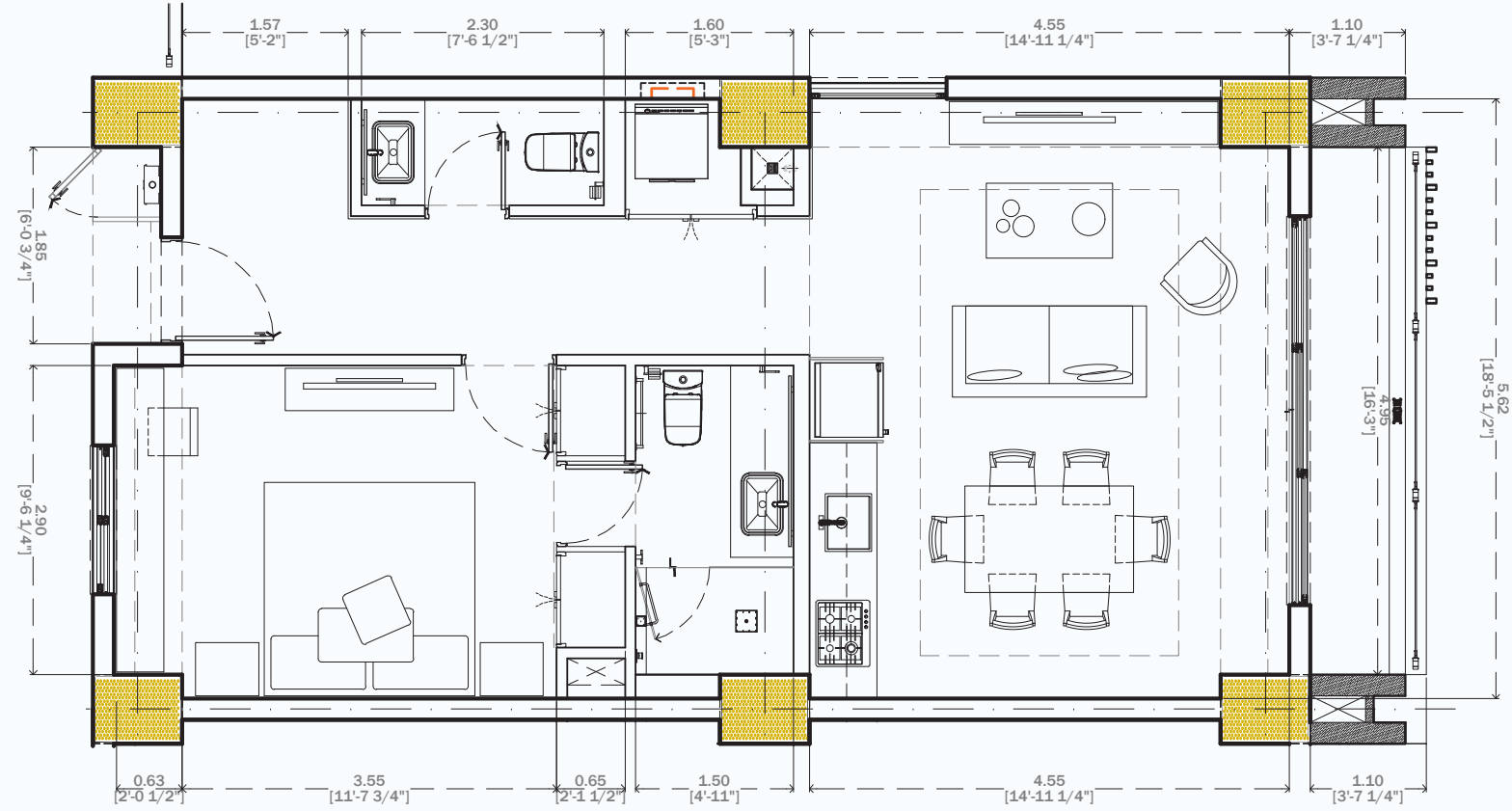
20 UNITS
3 BEDROOMS
3.5 BATHROOMS, LOCK OFF
2 CAR PARK
CELLAR



BÁLICA
Models

The developer reserves the right to change colors, materials, amenities, plans, prices, and terms at any time without notice.

*The furniture and gardening are decoration suggestions.



MODEL
Type 1

-  | 1 BEDROOM
-  | 1 1/2 BATHROOMS
-  | LIVING AREA
DINNING ROOM
-  | KITCHEN
-  | TERRACE
-  | LAUNDRY AREA

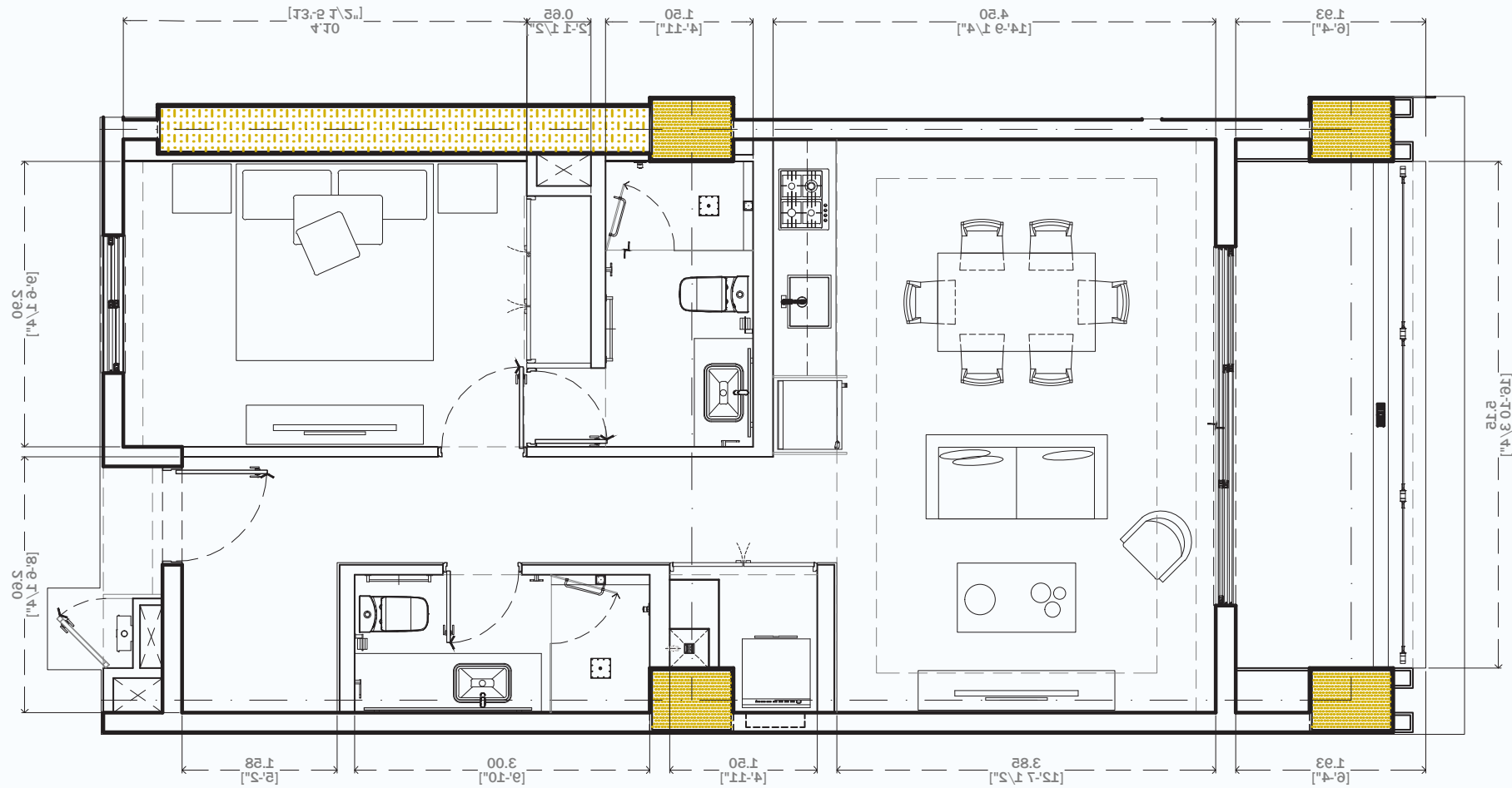
 | 1 CAR PARK

AVERAGE TOTAL FT²
900.72 FT² | 83.68 M²

INTERIOR:
703.74 FT² | 65.38 M²

1 CAR PARK:
134.54 FT² | 12.5 M²

EXTERIOR:
62.43 FT² | 5.80 M²



MODEL
Type 2

-  1 BEDROOM
-  2 BATHROOMS
-  LIVING AREA
DINNING ROOM
-  KITCHEN
-  TERRACE
-  LAUNDRY AREA

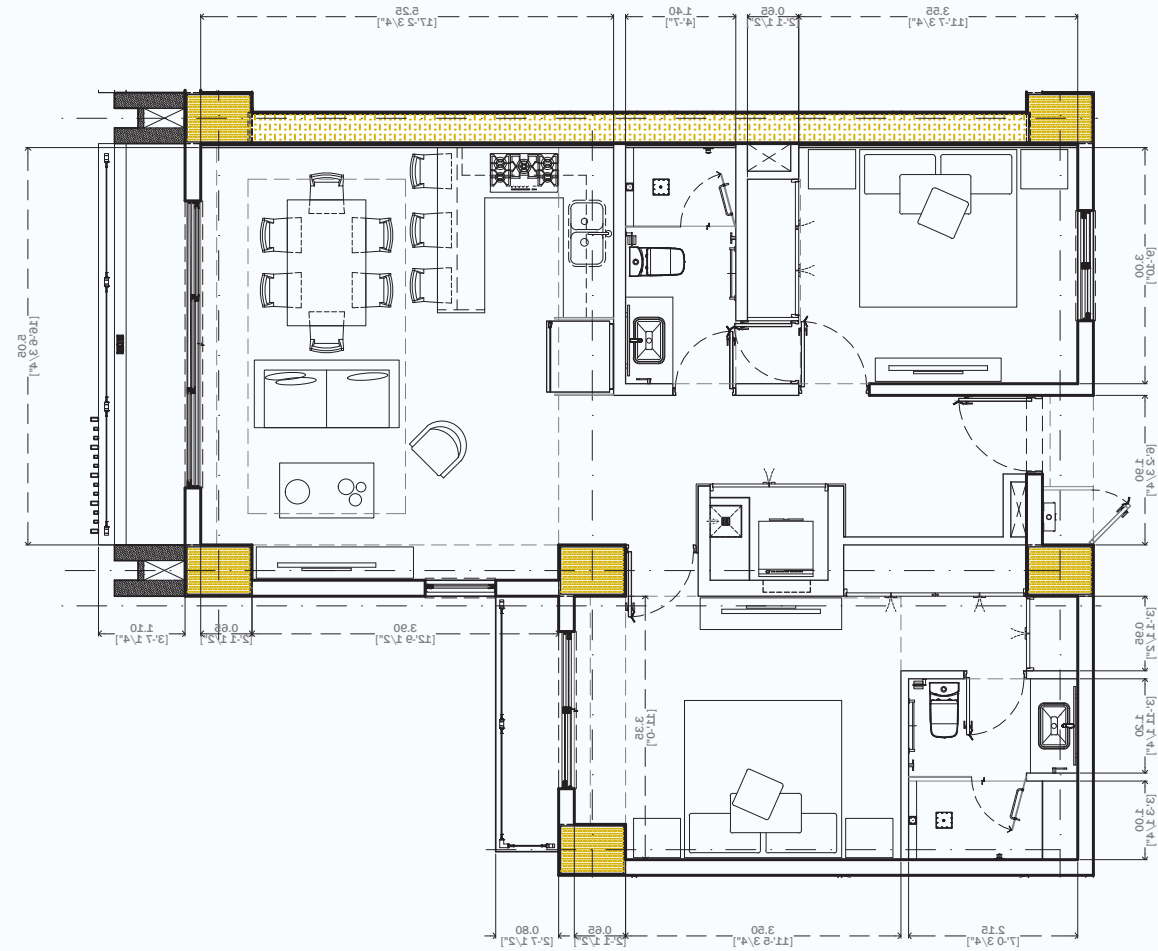
 1 CAR PARK

AVERAGE TOTAL FT²
1009.43 FT² | 93.78 M²

INTERIOR:
749.79 FT² | 69.66 M²

1 CAR PARK:
134.54 FT² | 12.5 M²

EXTERIOR:
125.07 FT² | 11.62 M²



MODEL
Type 3



2 BEDROOMS



2 BATHROOMS



LIVING AREA
DINNING ROOM



KITCHEN



TERRACE



LAUNDRY AREA



2 CAR PARK



CELLAR



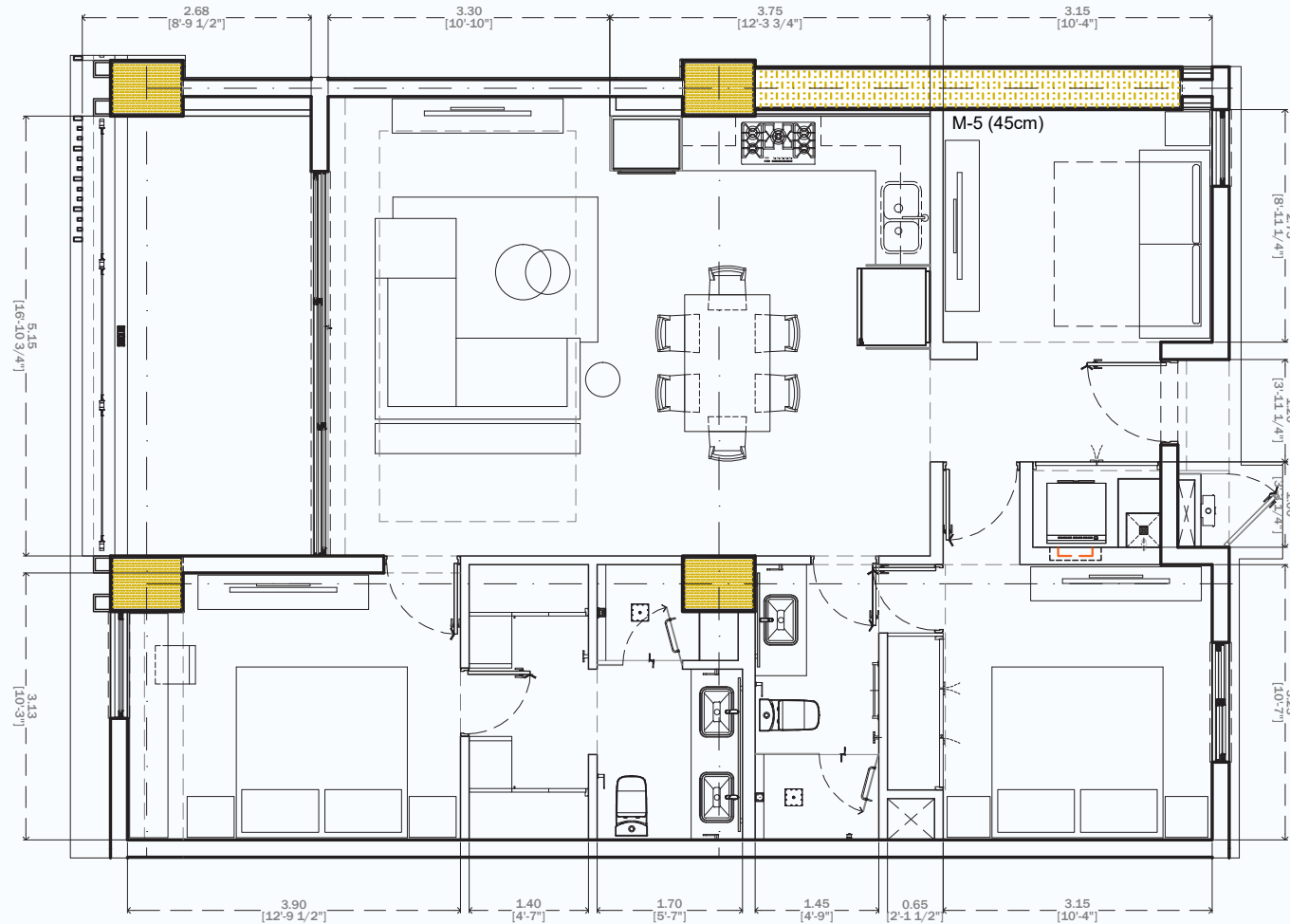
AVERAGE TOTAL FT²
1394.24 FT² | 129.53 M²

INTERIOR:
991.46 FT² | 92.11 M²

EXTERIOR:
92.25 FT² | 8.57 M²

2 CAR PARK:
269.09 FT² | 25 M²

CELLAR:
41.44 FT² | 3.85 M²



MODEL
Type 4

 2 BEDROOMS

 FLEX

 2 BATHROOMS

 LIVING AREA
DINNING ROOM

 KITCHEN

 TERRACE

 LAUNDRY AREA

 2 CAR PARK

 CELLAR

AVERAGE TOTAL FT²
1576.69 FT² | 146.48 M²

INTERIOR:
1108.89 FT² | 103.02 M²

EXTERIOR:
157.26 FT² | 14.61 M²

2 CAR PARK:
269.09 FT² | 25 M²

CELLAR:
41.44 FT² | 3.85 M²



BÁLICA

Special Features

The developer reserves the right to change colors, materials, amenities, plans, prices, and terms at any time without notice.

*The furniture and gardening are decoration suggestions.

Exterior Finishes

FLOORS



PEBBLE CRETE
MODEL: COAT FINE
ATALASIA WELLNESS



ROMAN TRAVERTINE
BRUSHED FINISH



SAND



PEBBLE CRETE
MODEL: BLACK NIZUC
ATALASIA WELLNESS



TRAVERTINE MARBLE
VERACRUZ
BRUSHED FINISH
ARCA



DIAMOND CRETE
MODEL: IVORY
ATALASIA WELLNESS



EXPOSED CONCRETE
NON-SLIP
CREAM SHADE

WALLS



EXPOSED CONCRETE
PIGMENT: CREAM DARK



CONCRETE
BOARD-FORMED
LIGHT CREAM SHADE



EXPOSED CONCRETE
PIGMENT: COFFEE SHADE



ROMAN TRAVERTINE
BRUSHED FINISH



WALLPAPER
JUAN IGUANA
REF. HAV302
KHROMA - HAVANA



WALLPAPER
JUAN SILVER
REF. HAV303
KHROMA - HAVANA



TILE MANACOR
MODEL: GLACIER
FORMAT: 6.5 X 40 CM
BRAND: EQUIPE

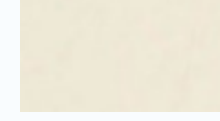


WOOD PANELING
COLOR: MONARCH
ARAUCO MONARCH MELAMINE
TEXTURE: FORESTA



STONE WALL
IRREGULAR DIAMOND-CUT
STONE FOR WALL
FORMAT: IRREGULAR
SUPPLIER: LABETA

CEILINGS



PAINT
BRAND: SHERWIN WILLIAMS
SW-7566
WESTHIGHLAND WHITE

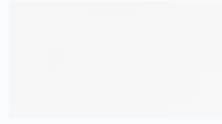
Interior Finishes

WALLS



SANDY TEXTURE
FINISH IN TURKEY
TONE

INTERIOR CEILINGS



SMOOTH CONTINUOUS
DRYWALL CEILING

TERRACE CEILINGS



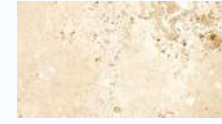
FAUX WOOD IN TEAK
TONE

APARTMENT FLOORS



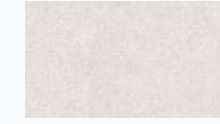
URBAN IVORY 60 X
1.20 CASTEL

TERRACE FLOORS



CANTABRIA BEIGE
60 X 1.20 CASTEL

BATHROOM FLOORS AND WALLS (SHOWER)



MYLO 30 X 60
CESANTONI

BATHROOM WALL



VALENTINO GOLD
60 X 120

TYPE OF LIGHTING



WARM LIGHT

GENERAL CARPENTRY



ARAUCO WOOD IN
MONARCH TONE

KITCHEN CARPENTRY



BASALT AND
BUBBLEGUM TONE

KITCHEN COUNTERTOPS



CALACATTA GOLD

BATHROOM COUNTERTOPS



SANTO TOMAS
MARBLE

BATHROOM ACCESSORIES



Small and large towel
rails in Metal Gun color
or similar.

SHOWER



Single lever and Shower
in Metal Gun color or
similar.

ACCESSORIES



Paper holder and hook
in Metal Gun color or
similar.

Smart Home



ECHO DOT 4TH GENERATION*

- Voice assistant with connection to multiple apps for calls and music
- Controls the different SmartHome devices



SECURITY CAMERAS *

- Outdoor waterproof
- 112o angle of view
- HD video at 1080p
- EcoShow compatible
- Storage in the cloud and in SD memory (not included)
- Infrared night vision at 20 meters
- LED lamp and siren included



LIGHT *

- Controls LED, incandescent and halogen bulbs
- Ignition control with voice, from the app or through the switches
- Schedules and scenes programming
- Remote activation
- Controls up to 6 complete lighting cutouts



LLOYD'S LC-1342 LOCK *

- 4 opening methods: physical key, fingerprint, numeric code from the app.
- Dynamic passwords for a single use or for time ranges



KUCACCI LOCK KU-H15B *

- 5 Opening Methods: Physical key, fingerprint, numerical code, card approach and from the app.
- Dynamic passwords for a single use or for time ranges



EZVIZ LOCK CS-L2S

- 5 methods of access: Physical key, fingerprint, numeric code, card, and through the app.
- Dynamic passwords for single use or by time ranges.

Smart Home



BROADLINK RM4 RF CONTROL

- Universal Infrared Audio and Video Remote Control
- Wi-Fi Remote Hub for Smart Homes, Compatible with Alexa
- Control for AC, TV's and any remote control device



VIDEO INTERCOM

- Waterproof for exterior
- Angle of view of 140 degrees
- HD video at 1080p
- Compatible with EcoShow
- Cloud storage
- Infrared night vision at 20 meters



TAPO 310 WIFI IP CAMERA

- Local memory recording
- Micro SD (32 GB included).
- Motion detection
- 2-way audio
- Night vision of 20mts
- Requires electrical connection



ECHO SHOW

- Voice assistant with connection to multiple apps for calls and music
- Controls the different SmartHome devices
- High quality sound
- High definition video



It's time to start your new life



BÁLICA

RESORT LIVING

